

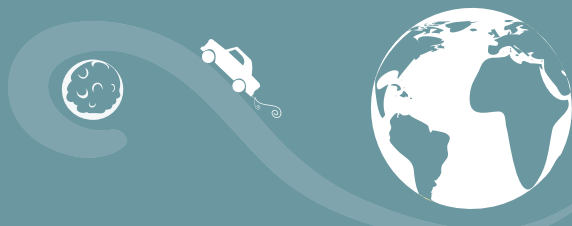
PRESENTS

Our Community Carbon Footprint

3,613,870
tonnes of
greenhouse gas
(GHG) emissions



That's the same amount of GHG emissions as a 2010 Honda Civic would produce driving to the moon and back 33,798 times!



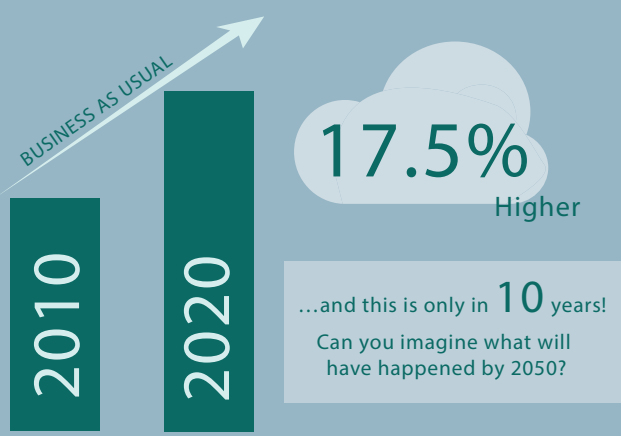
Where do these GHG emissions come from?



IF WE EACH HAD AN EQUAL SHARE
THAT WOULD MEAN EACH PERSON IN WATERLOO REGION EMITS **6.67** TONNES OF GHGS.

IF WE DON'T TAKE ACTION in Waterloo Region, what will our Community Greenhouse Gas Emissions be in 2020?

TAKE A LOOK



IS THERE SOMETHING WE CAN DO TO REDUCE EMISSIONS TO LEVELS BELOW THIS FORECAST? **YES!**

A community-wide **ACTION PLAN** on energy and climate can give us the ideas and tools we need to reduce our community's carbon footprint.

ClimateActionWR is a collaborative initiative between REEP Green Solutions, the Region of Waterloo, and Sustainable Waterloo Region along with area municipalities and utilities. We are in the process of creating a community-wide Climate Action Plan for Waterloo Region.



Along with reducing GHG emissions, the action plan will also help to:

- Save us money
- Support our local economy
- Increase our energy security
- Improve our air quality
- Create a healthier Waterloo Region
- Reduce our waste and water usage

YOU play an important role in helping our region set a reduction target for 2020. The next step is working together to develop our community-wide action plan. Keep an eye out for community engagement opportunities happening throughout late 2012 and 2013.



THE FIVE-MILESTONE PROCESS for acting locally on climate change:



October 2011 -> May 2012 June 2012 -> Fall 2013 Fall 2013 -> 2020